

**JELD-WEN DOOR  
INSTALLATION DETAILS  
STEEL 24 GA. WOOD EDGE  
OPAQUE & GLAZED  
UP TO 8'-4" X 8'-0"  
OUTSWING/INSWING**

**GENERAL NOTES**

- THIS PRODUCT IS DESIGNED TO COMPLY WITH CURRENT INTERNATIONAL BUILDING CODE (I.B.C.) & INTERNATIONAL RESIDENTIAL CODE (I.R.C.) AND THE CURRENT FLORIDA BUILDING CODES (FBC). PRODUCT HAS BEEN TESTED TO TAS 201-94, TAS 202-94 AND TAS 203-94. PRODUCT ALSO MEETS "HIGH VELOCITY HURRICANE ZONE" (HVHZ) REQUIREMENTS.
- 1X AND 2X WOOD BUCKS BY OTHERS AND MUST BE ANCHORED PROPERLY TO TRANSFER LOADS TO THE STRUCTURE. BUCK MATERIAL MUST HAVE A SPECIFIC GRAVITY OF 0.55 OR GREATER.

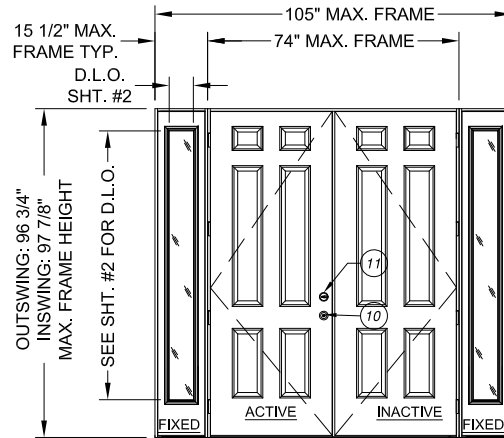
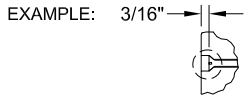
- PRODUCT ANCHOR TYPES AND SPACING ARE SHOWN ON SHEET 7. DIMENSIONS SHOWN FOR ANCHOR SPACING ARE ALWAYS FROM EDGE OF UNIT FRAME. ANCHOR EMBEDMENT TO BASE MATERIAL SHALL BE BEYOND WALL DRESSING OR STUCCO.

- THIS DOCUMENT SUPERCEDES OTHER ANCHOR INSTALLATION INSTRUCTIONS FOR IMPACT RATED DOORS. FOR OTHER IMPORTANT INSTALLATION INSTRUCTIONS, REFER TO JELD-WEN DOCUMENT #J1106 (INSTALLATION INSTRUCTIONS FOR PRE-HUNG ENTRY DOORS) FOUND ON THE JELD-WEN WEBSITE: [JELD-WEN.COM/LEARN/RESOURCES/INSTALLATION & FINISHING/](http://JELD-WEN.COM/LEARN/RESOURCES/INSTALLATION&FINISHING/).

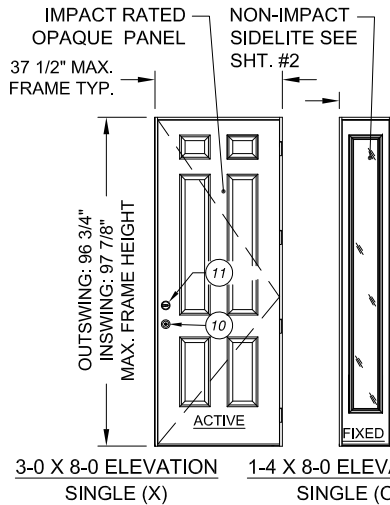
- FLORIDA APPROVED IMPACT RESISTANCE SHUTTERS ARE REQUIRED ON NON-IMPACT GLASS SIDELITES.

- FOR DESIGN PRESSURE RATINGS, SEE TABLE 1, SHEET 1.

- ALL FASTENERS IN WOOD SHALL BE COUNTERSUNK 3/16" DEEP.

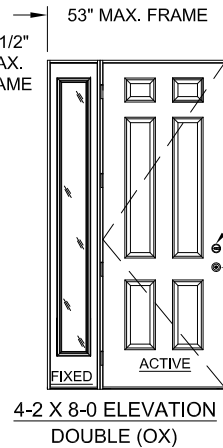


8-4 X 8-0 ELEVATION  
DOUBLE DOOR W/ 1'-4 SIDELITES (OXXO)

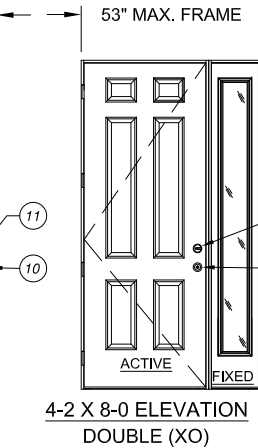


3-0 X 8-0 ELEVATION  
SINGLE (X)

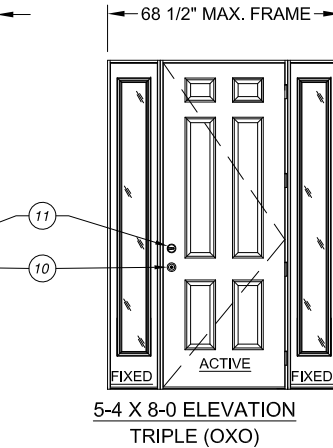
1-4 X 8-0 ELEVATION  
SINGLE (O)



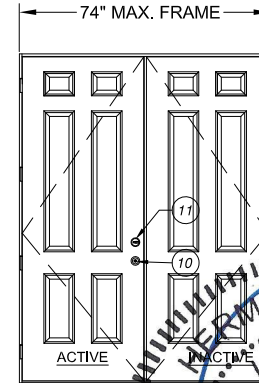
4-2 X 8-0 ELEVATION  
DOUBLE (OX)



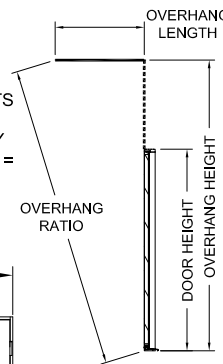
4-2 X 8-0 ELEVATION  
DOUBLE (XO)



5-4 X 8-0 ELEVATION  
TRIPLE (OXO)



7-4 X 8-0 ELEVATION  
DOUBLE (XX)



\* NOTE: PRODUCT HAS NOT BEEN RATED FOR WATER INFILTRATION. IF AUTHORITY HAVING JURISDICTION REQUIRES THAT PRODUCT MEETS THIS REQUIREMENT, PRODUCT SHALL BE USED WHEN INSTALLED AT LOCATION PROTECTED BY OVERHANG SUCH THAT OVERHANG (OH) RATIO = OH LENGTH ÷ OH HEIGHT IS ≥ 1.0

**TABLE 1**

HVHZ APPROVED SYSTEMS: O, X, OO, XO or OX, OXO, OOO, OXX or XXO, OXXO, OOO W/ BOXED SIDELITES		
SIZE	QUALIFIES: OPAQUE ACTIVE PANELS AND NON-IMPACT GLASS SIDELITES [5]	
MAX. PANEL WIDTH = 35 3/4"	8-0 TALL SYSTEMS:	
	( X ) (OXO) ( XX ) (XXO) (OXXO)	
OUTSWING	POSITIVE	+ 45*
	NEGATIVE	- 45*
INSWING	POSITIVE	+ 45*
	NEGATIVE	- 45*

**COMPONENT LIST**

ITEM	DESCRIPTION	MATERIAL	QTY.
1	NON-COMPRESSION SHIM (0.25" MAX. THK.)	WOOD	AS REQ.
2	2x WOOD SUB BUCK (S.G. MUST BE 0.55 OR GREATER)	WOOD	AS REQ.
3	1x WOOD SUB BUCK (S.G. MUST BE 0.55 OR GREATER)	WOOD	AS REQ.
4	#10 WOOD INSTALLATION SCREW W/ 1 1/2" MIN. EMBEDMENT	STEEL	AS REQ.
5	3/16" ITW TAPCON ANCHOR W/ 1 1/4" MIN. EMBEDMENT	STEEL	AS REQ.
6	#9 X 2 1/2" PHILLIPS FLATHEAD WOOD SCREW	STEEL	4 OR 8
7	#8 X 2" PHILLIPS FLATHEAD WOOD SCREW	STEEL	AS REQ.
8	#9 X 3/4" PHILLIPS FLATHEAD WOOD SCREW	STEEL	28 OR 56
9	1" OVERALL PLASTIC FRAME NON-IMPACT GLAZING IG BY ODL	PVC	1
10	LOCK SERIES 400	STEEL	1
11	DEADBOLT SERIES 780	STEEL	1
12	FLAT LITE KIT	ALUMINUM	1
13	ADA THRESHOLD	ALUMINUM	1

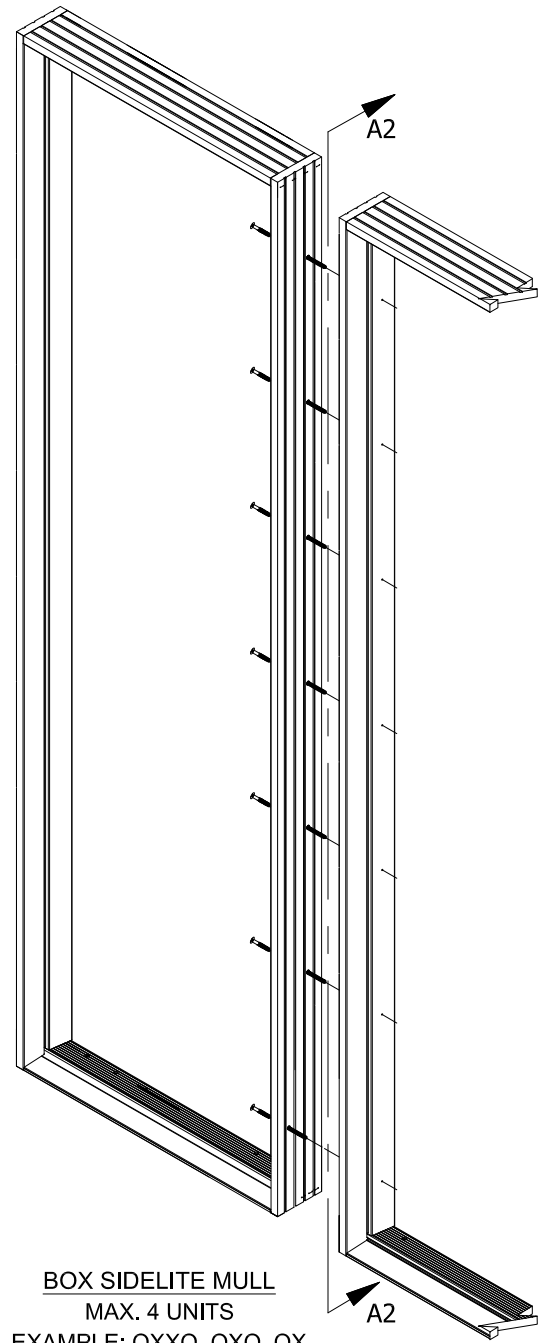
SHEET INDEX	
SHEET #	DESCRIPTION
1	GENERAL NOTES, B.O.M., ELEVATIONS & ANCHOR LOCATIONS
2	OUTSWING/INSWING BOX MULLING DETAILS
3	OUTSWING VERTICAL AND HORIZONTAL SECTIONS IN WOOD
4	OUTSWING VERT. AND HORIZ. SECTIONS IN MASONRY/CONCRETE
5	INSWING VERTICAL AND HORIZONTAL SECTIONS IN WOOD
6	INSWING VERT. AND HORIZ. SECTIONS IN MASONRY/CONCRETE
7	OUTSWING AND INSWING ANCHORING DETAILS

NO.	DATE	REVISIONS	BY
1	01/29/20	DWG NUM. CHANGE FROM TB DW072012FL TO D015858.	
		ADA THRESHOLD ADDED	

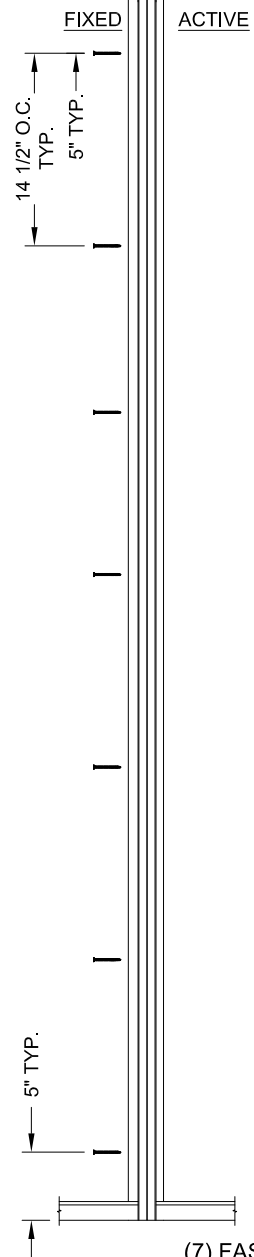
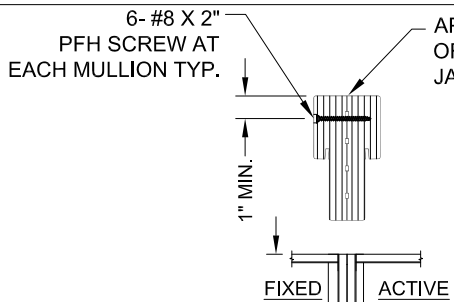
**JELD-WEN**  
WINDOWS & DOORS  
3737 Lakeport Blvd.  
Klamath Falls, OR 97601  
Phone: (541) 882-3451  
Fax: (541) 850-2609

STATE OF FLORIDA  
PROFESSIONAL ENGINEER  
HERMES F. NOREBO  
No. 73778  
398 E. DANIA BEACH BLVD, STE. 338  
DANIA BEACH, FL 33004  
FBPE CERT. OF AUTH. NO. 29578

PRODUCT  
24 GA. STEEL W.E. UP TO 8-4 X 8-0 OPAQUE OP.  
WITH NON-IMPACT SIDELITES  
PART OR ASSEMBLY  
GENERAL NOTES, ELEVATIONS, DP RATINGS  
AND B.O.M.  
DATE: 1/20/2012  
SCALE: NONE  
DWG. BY: G.LUBBECKE  
CHK. BY: S.SAFFELL  
DRAWING No.:  
D015858  
SHEET 1 OF 7



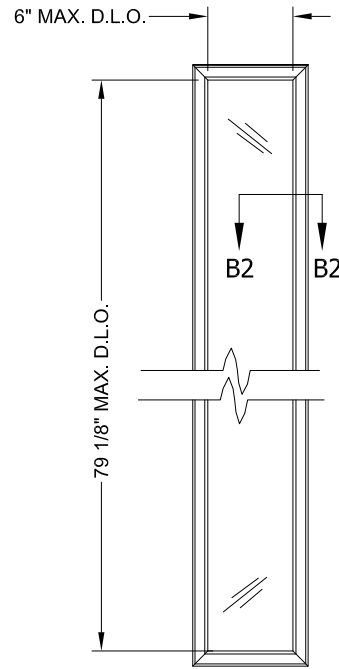
**BOX SIDELITE MULL**  
 MAX. 4 UNITS  
 EXAMPLE: OXOX, OXO, OX



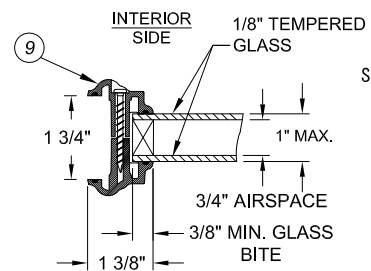
**DETAIL A2**  
 (7) FASTENER LOCATIONS AT  
 DOUBLE-BACK JAMB ATTACHMENT

APPLY DAP ALEX PLUS SILICONE  
 OR EQUIV. BETWEEN  
 JAMBS BEFORE MULLING

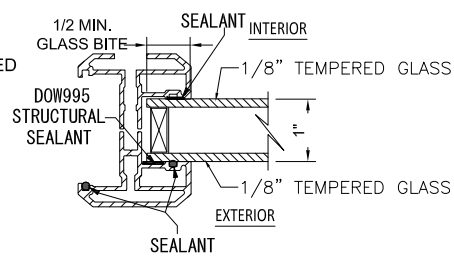
6- #8 X 2"  
 PFH SCREW AT  
 EACH MULLION TYP.



**ODL LIP-LITE NON-IMPACT**  
 1-4 X 8-0 SHOWN



**DETAIL B2**  
 ODL NON-IMPACT GLAZING DETAIL  
 MAX. D.L.O.: 6" X 79 1/8"



**DETAIL B2**  
 20 1/2" MAX. D.L.O. HEIGHT  
 62 5/8" MAX. D.L.O. WIDTH

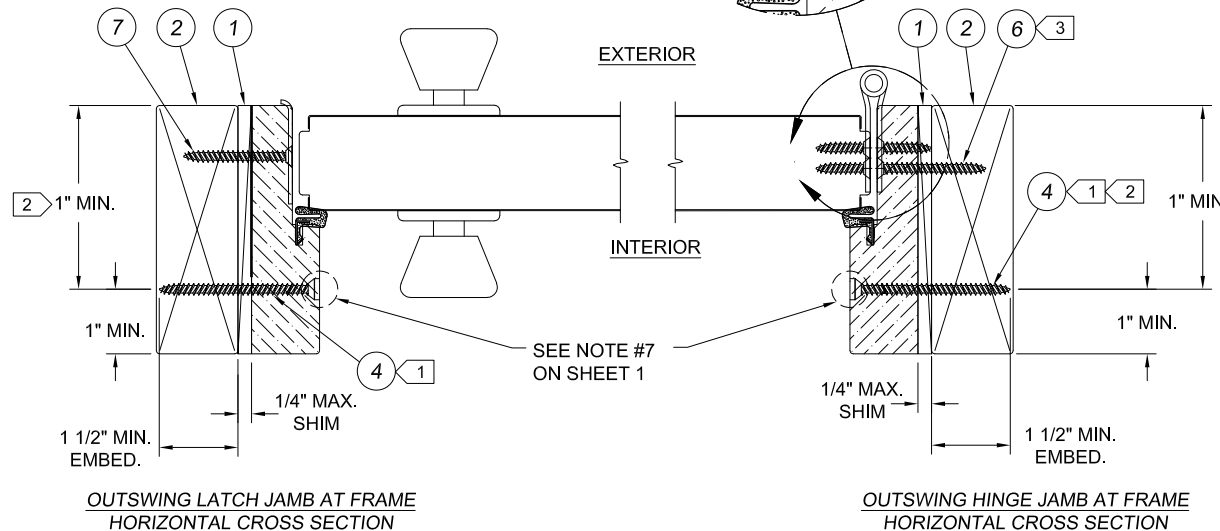
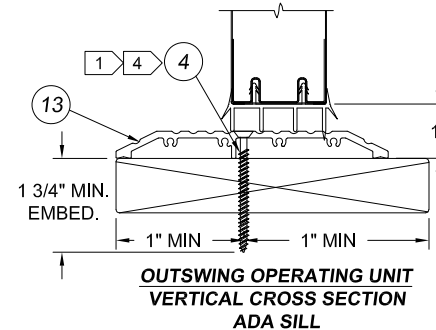
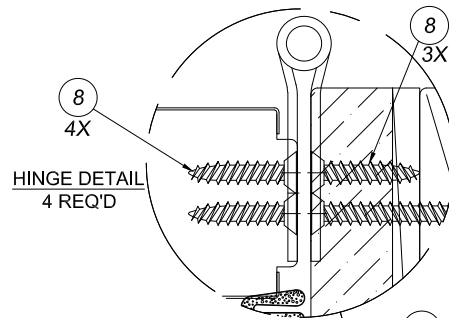
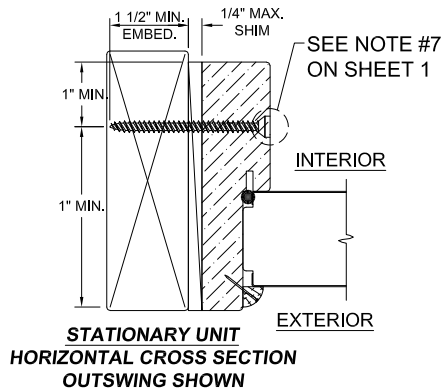
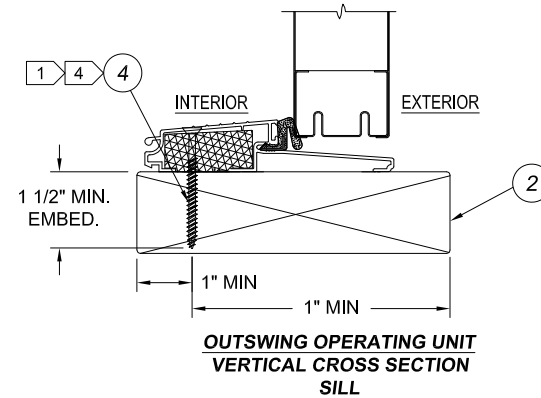
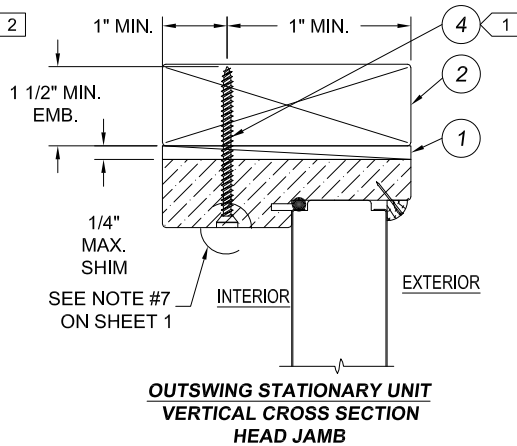
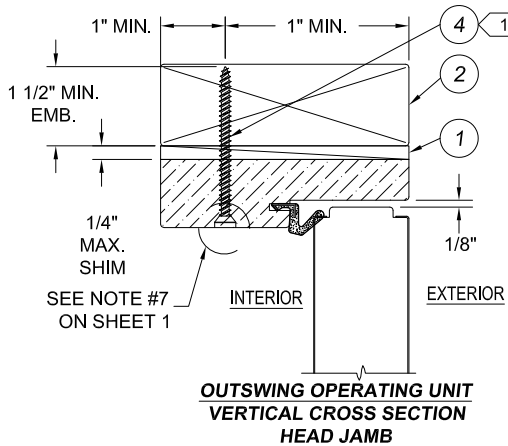
**HERMES F. NORERO**  
 LICENSE NO. 73778  
 STATE OF FLORIDA  
 PROFESSIONAL ENGINEER

**HERMES F. NORERO**  
 FLORIDA P.E. NO. 73778  
 398 E. DANIA BEACH BLVD., STE. 338  
 DANIA BEACH, FL 33004  
 FBPE CERT. OF AUTH. NO. 29578

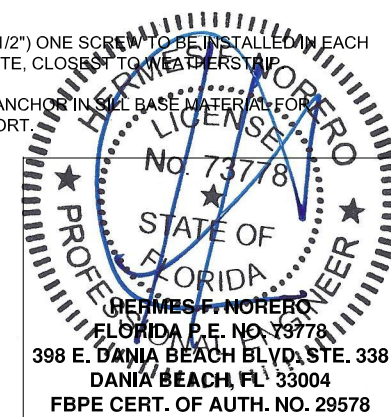
**JELD-WEN**  
 WINDOWS & DOORS

3737 Lakeport Blvd.  
 Klamath Falls, OR 97601  
 Phone: (541) 882-3451  
 Fax: (541) 850-2609

PRODUCT	24 GA. STEEL W.E. UP TO 8-4 X 8-0 OPAQUE OP. WITH NON-IMPACT SIDELITES
PART OR ASSEMBLY	MULLING DETAILS AND GLAZING OPTIONS
DATE:	1/20/2012
SCALE:	NONE
DWG. BY:	G.LUBBECKE
CHK. BY:	S.SAFFELL
DRAWING No.:	D015858
SHEET	2 OF 7



- NOTES:
- 1 FOR PLACEMENT OF ITW TAPCON ANCHORS IN 2X BUCK OR 1X BUCK CONCRETE/MASONRY OPENINGS, SEE SHEET 3
  - 2 OPTIONALLY, ANCHOR CAN BE PLACED IN NARROW SECTION OF HEAD OR JAMB AS LONG AS MINIMUM EMBEDMENT IS ACHIEVED.
  - 3 ITEM #6, (#9 X 2 1/2") ONE SCREW TO BE INSTALLED IN EACH HINGE AT JOB SITE, CLOSEST TO WEATHERSTRIP
  - 4 AT SILL, PLACE ANCHOR IN SILL BASE MATERIAL FOR MAXIMUM SUPPORT.



**JELD-WEN**  
WINDOWS & DOORS

3737 Lakeport Blvd.  
Klamath Falls, OR 97601  
Phone: (541) 882-3451  
Fax: (541) 850-2609

PRODUCT  
24 GA. STEEL W.E. UP TO 8-4 X 8-0 OPAQUE OP.  
WITH NON-IMPACT SIDELITES

PART OR ASSEMBLY  
OUTSWING VERTICAL AND HORIZONTAL SECTIONS  
IN WOOD

DATE: 1/20/2012

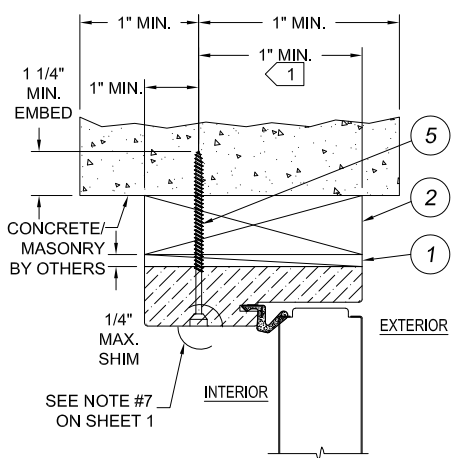
SCALE: NONE

DWG. BY: G.LUBBECKE

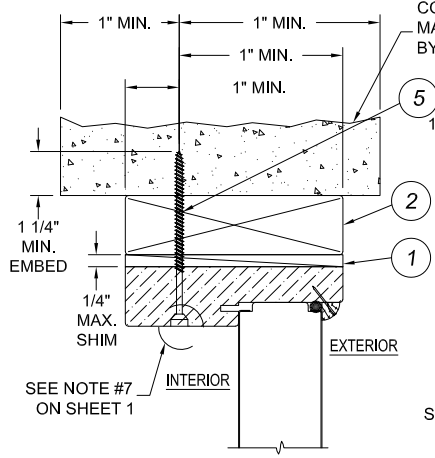
CHK. BY: S.SAFFELL

DRAWING No.:  
**D015858**

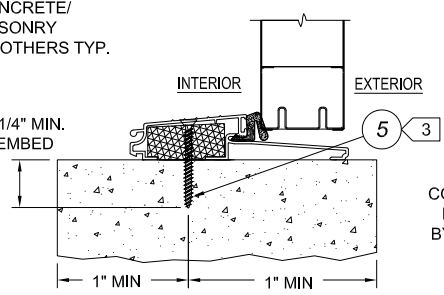
SHEET 3 OF 7



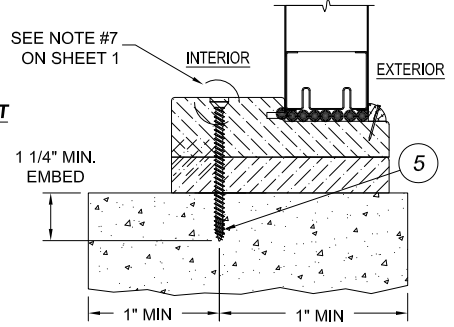
**OUTSWING OPERATING UNIT  
VERTICAL CROSS SECTION  
HEAD JAMB**



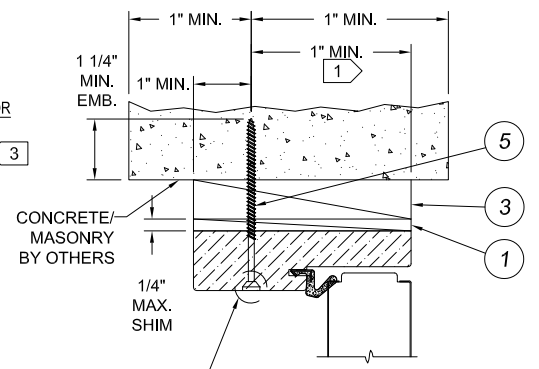
**OUTSWING STATIONARY UNIT  
VERTICAL CROSS SECTION  
HEAD JAMB**



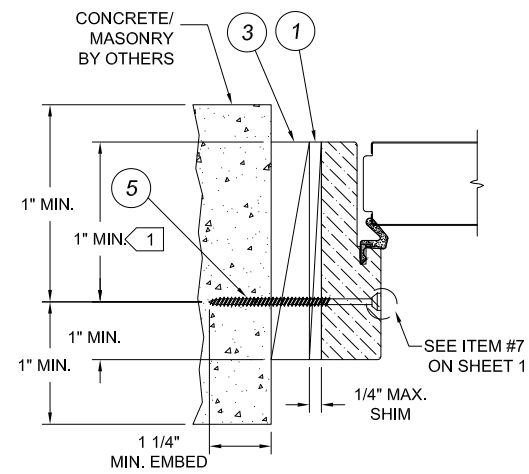
**OUTSWING OPERATING UNIT  
VERTICAL CROSS SECTION  
SILL**



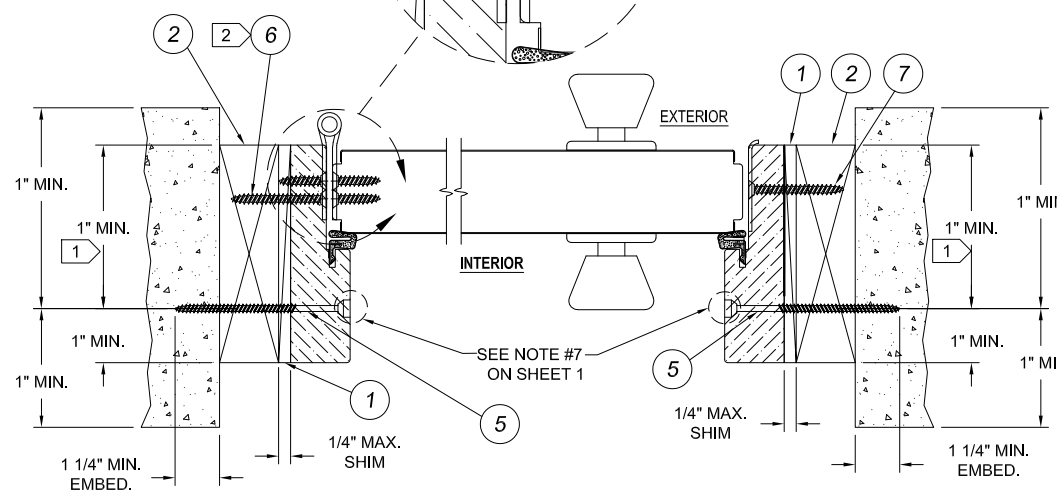
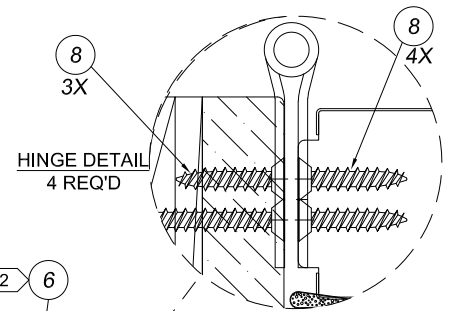
**OUTSWING STATIONARY UNIT  
VERTICAL CROSS SECTION  
BOXED SIDELITE SILL**



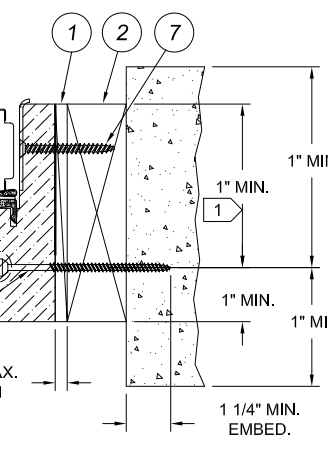
**OUTSWING OPERATING UNIT  
VERTICAL CROSS SECTION  
OPTIONAL 1\"/>**



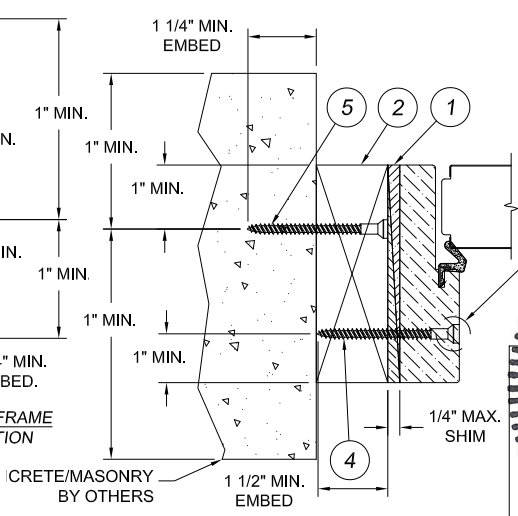
**OUTSWING OPERATING UNIT  
HORIZONTAL CROSS SECTION  
OPTIONAL 1\"/>**



**OUTSWING HINGE JAMB AT FRAME  
HORIZONTAL CROSS SECTION**



**OUTSWING LATCH JAMB AT FRAME  
HORIZONTAL CROSS SECTION**



**OPTIONAL MASONRY/CONCRETE INSTALL  
CROSS SECTION OF HEAD JAMB OR SIDE JAMB**

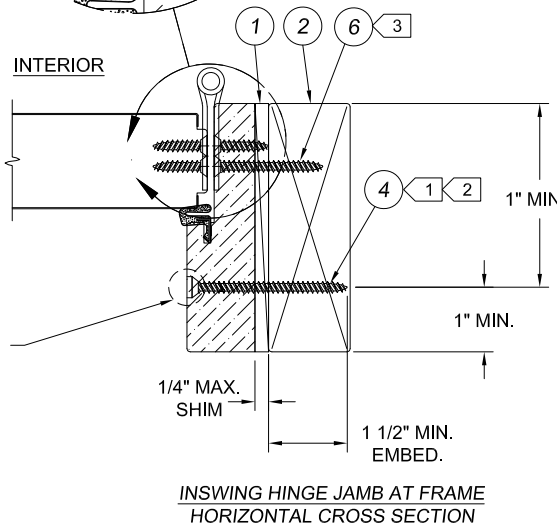
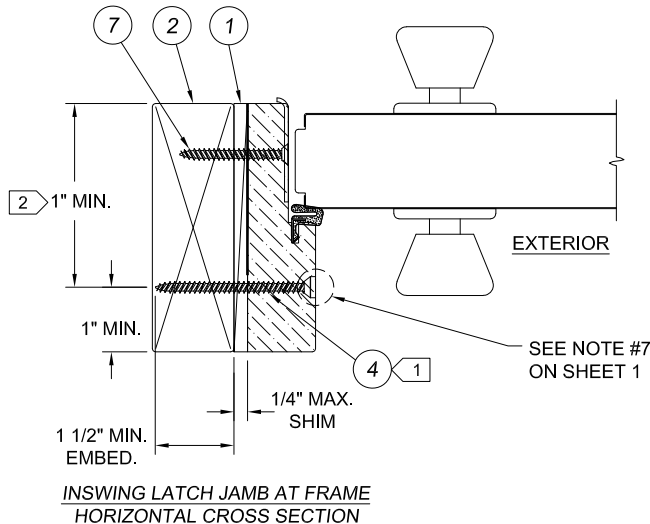
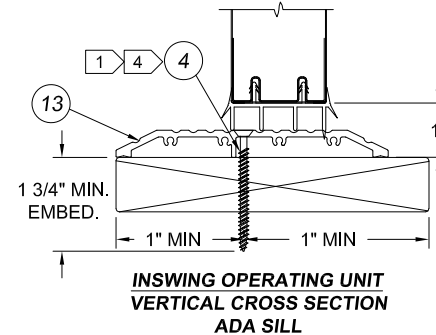
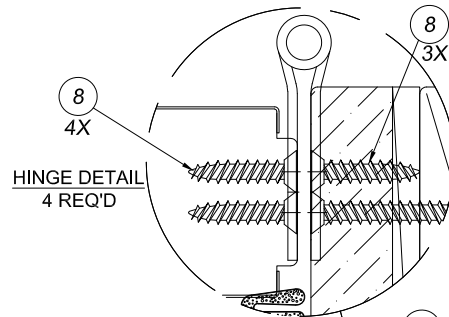
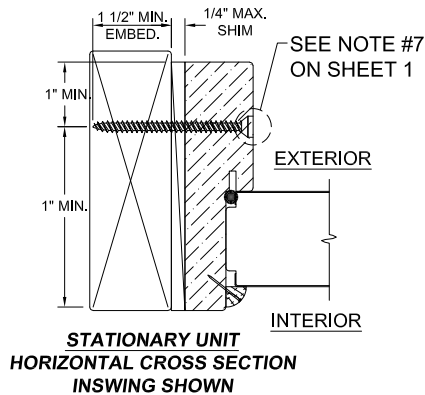
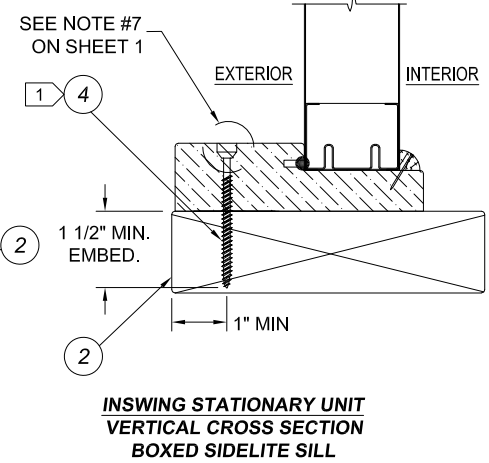
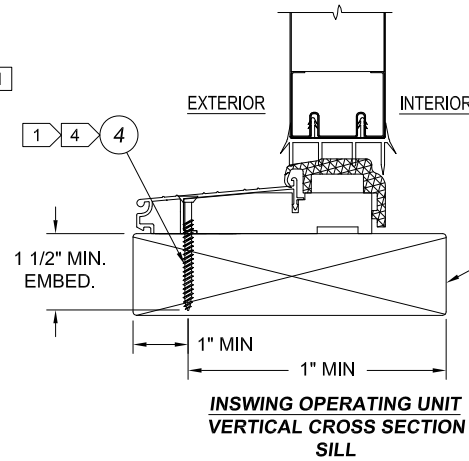
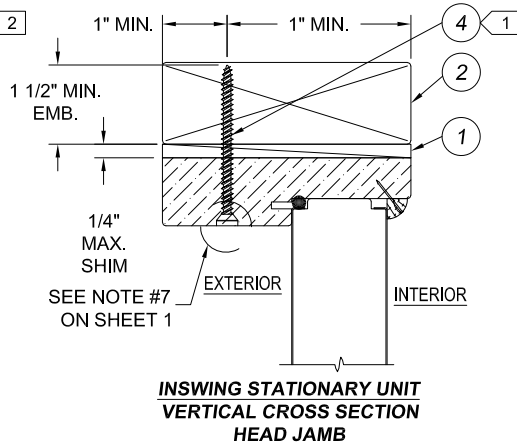
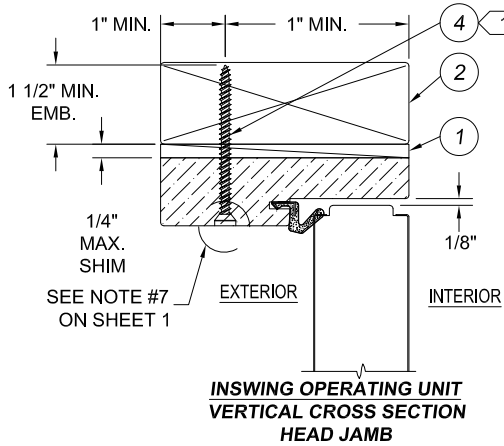
- NOTES:
- 1 OPTIONALLY, ANCHOR CAN BE PLACED IN NARROW SECTION OF HEAD OR JAMB AS LONG AS MINIMUM EMBEDMENT IS ACHIEVED.
  - 2 ITEM #6, (#9 X 2 1/2\") ONE SCREW TO BE INSTALLED IN EACH HINGE AT JOB SITE, CLOSEST TO WEATHERSTRIP.
  - 3 AT SILL, PLACE ANCHOR IN SILL BASE MATERIAL FOR MAXIMUM SUPPORT.

**JELD-WEN**  
WINDOWS & DOORS  
3737 Lakeport Blvd.  
Klamath Falls, OR 97601  
Phone: (541) 882-3451  
Fax: (541) 850-2609

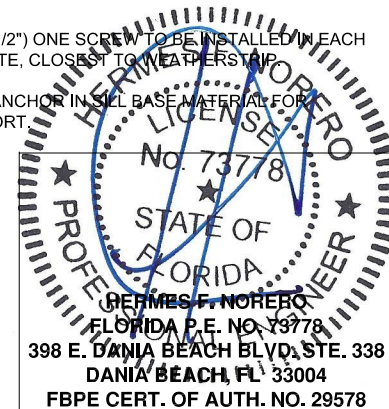
PRODUCT  
24 GA. STEEL W.E. UP TO 8-4 X 8-0 OPAQUE OP.  
WITH NON-IMPACT SIDELITES  
PART OR ASSEMBLY  
OUTSWING VERTICAL AND HORIZONTAL SECTIONS  
IN MASONRY/CONCRETE

DATE: 1/20/2012  
SCALE: NONE  
DWG. BY: G.LUBBECKE  
CHK. BY: S.SAFFELL  
DRAWING No.:  
**D015858**  
SHEET 4 OF 7





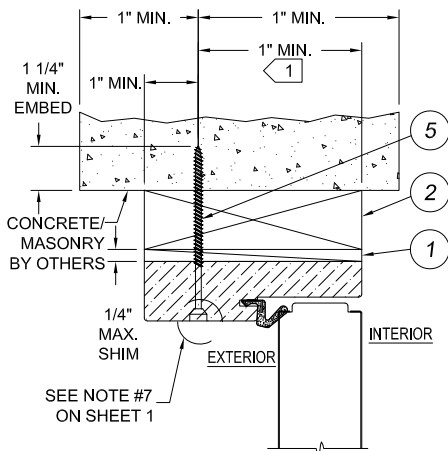
- NOTES:
- FOR PLACEMENT OF ITW TAPCON ANCHORS IN 2X BUCK OR 1X BUCK CONCRETE/MASONRY OPENINGS, SEE SHEET 3
  - OPTIONALLY, ANCHOR CAN BE PLACED IN NARROW SECTION OF HEAD OR JAMB AS LONG AS MINIMUM EMBEDMENT IS ACHIEVED.
  - ITEM #6, (#9 X 2 1/2") ONE SCREW TO BE INSTALLED IN EACH HINGE AT JOB SITE, CLOSEST TO WEATHERSTOP
  - AT SILL, PLACE ANCHOR IN SILL BASE MATERIAL FOR MAXIMUM SUPPORT.



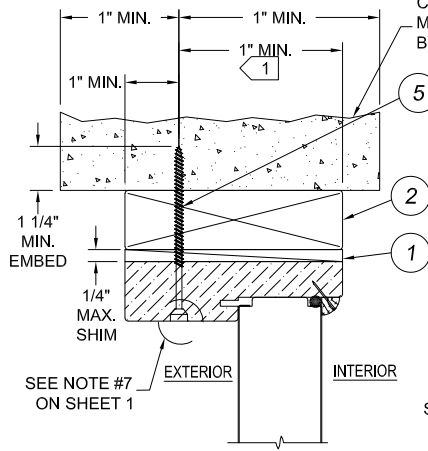
**JELD-WEN**  
WINDOWS & DOORS  
3737 Lakeport Blvd.  
Klamath Falls, OR 97601  
Phone: (541) 882-3451  
Fax: (541) 850-2609

PRODUCT  
24 GA. STEEL W.E. UP TO 8-4 X 8-0 OPAQUE OP.  
WITH NON-IMPACT SIDELITES  
PART OR ASSEMBLY  
INSWING VERTICAL AND HORIZONTAL SECTIONS  
IN WOOD

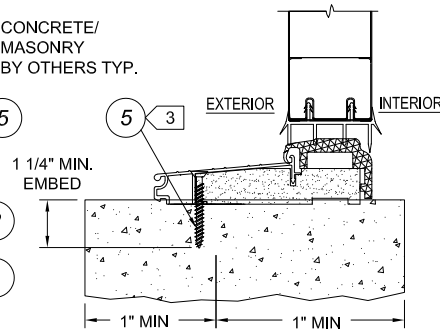
DATE: 1/20/2012  
SCALE: NONE  
DWG. BY: G.LUBBECKE  
CHK. BY: S.SAFFELL  
DRAWING No.: D015858  
SHEET 5 OF 7



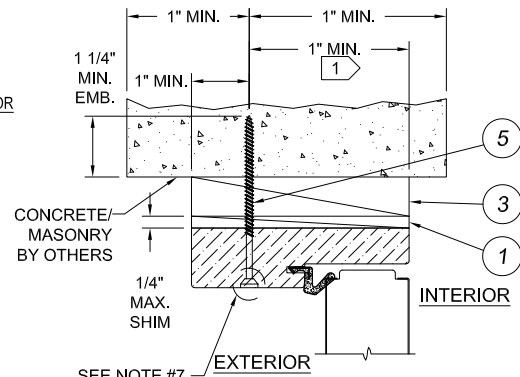
**INSWING OPERATING UNIT  
VERTICAL CROSS SECTION  
HEAD JAMB**



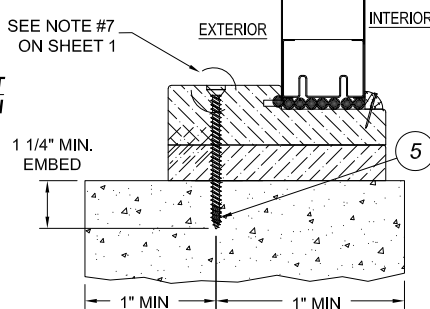
**INSWING STATIONARY UNIT  
VERTICAL CROSS SECTION  
HEAD JAMB**



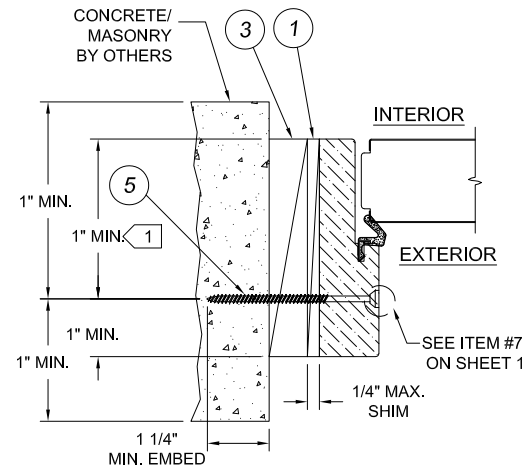
**INSWING OPERATING UNIT  
VERTICAL CROSS SECTION  
SILL**



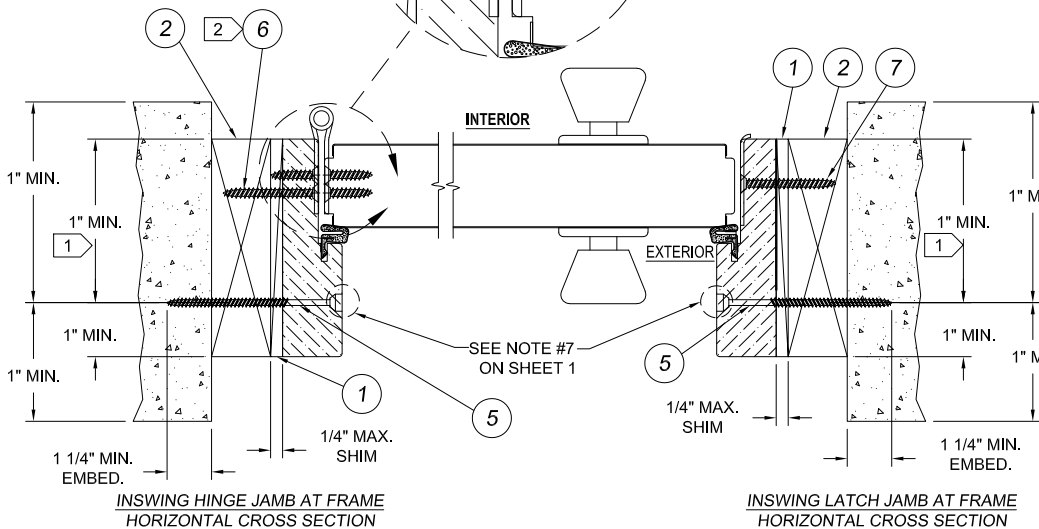
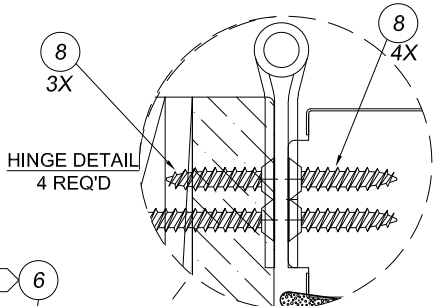
**INSWING OPERATING UNIT  
VERTICAL CROSS SECTION  
OPTIONAL 1\"/>**



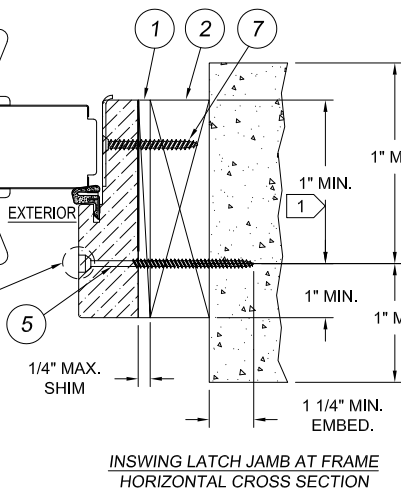
**INSWING STATIONARY UNIT  
VERTICAL CROSS SECTION  
BOXED SIDELITE SILL**



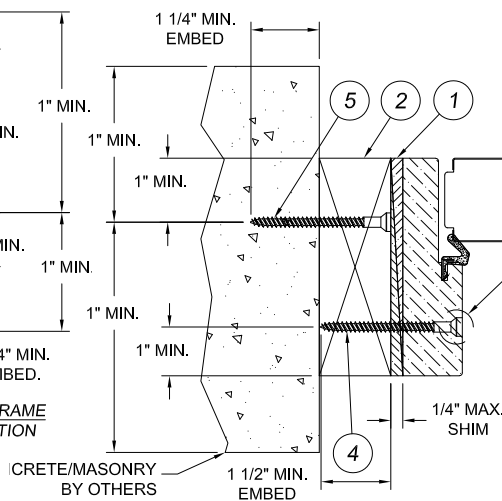
**INSWING OPERATING UNIT  
HORIZONTAL CROSS SECTION  
OPTIONAL 1\"/>**



**INSWING HINGE JAMB AT FRAME  
HORIZONTAL CROSS SECTION**

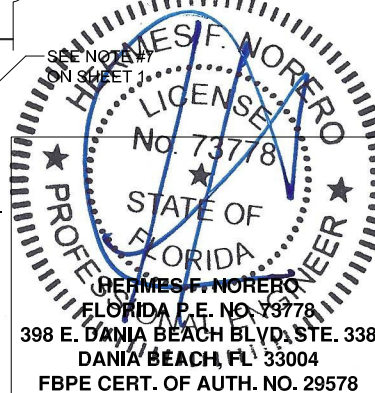


**INSWING LATCH JAMB AT FRAME  
HORIZONTAL CROSS SECTION**



**OPTIONAL MASONRY/CONCRETE INSTALL  
CROSS SECTION OF HEAD JAMB OR SIDE JAMB**

- NOTES:
- 1) OPTIONALLY, ANCHOR CAN BE PLACED IN NARROW SECTION OF HEAD OR JAMB AS LONG AS MINIMUM EMBEDMENT IS ACHIEVED.
  - 2) ITEM #6, (#9 X 2 1/2\") ONE SCREW TO BE INSTALLED IN EACH HINGE AT JOB SITE, CLOSEST TO WEATHERSTRIP.
  - 3) AT SILL, PLACE ANCHOR IN SILL BASE MATERIAL FOR MAXIMUM SUPPORT.



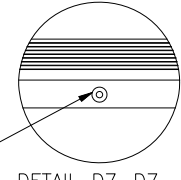
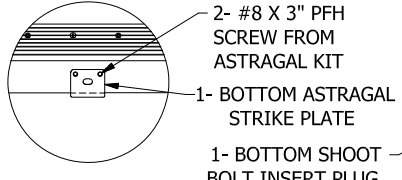
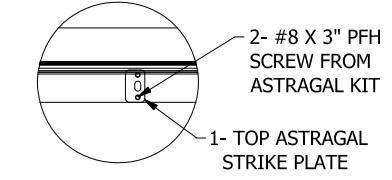
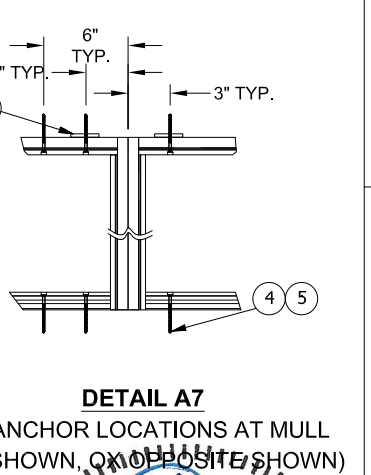
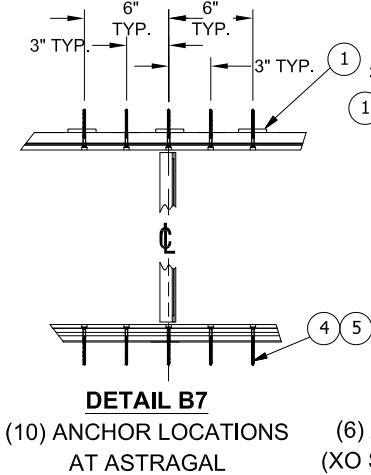
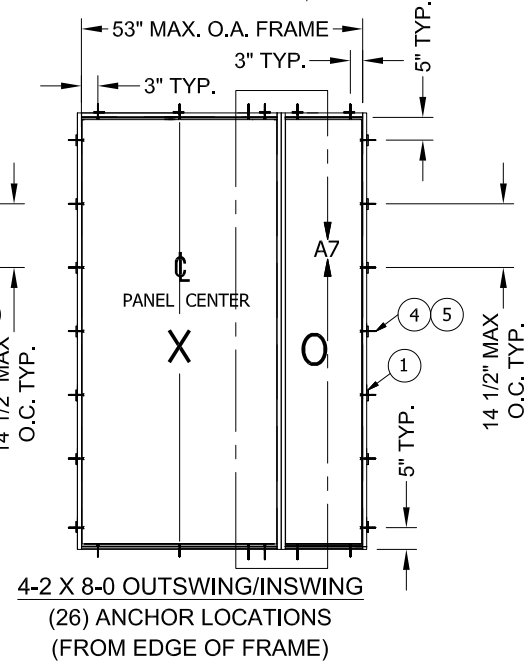
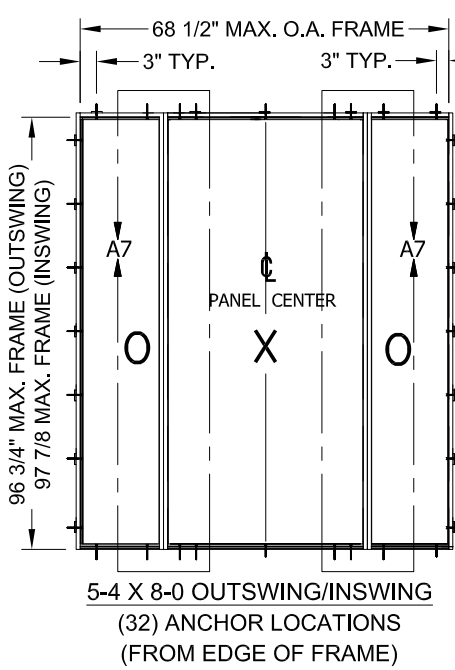
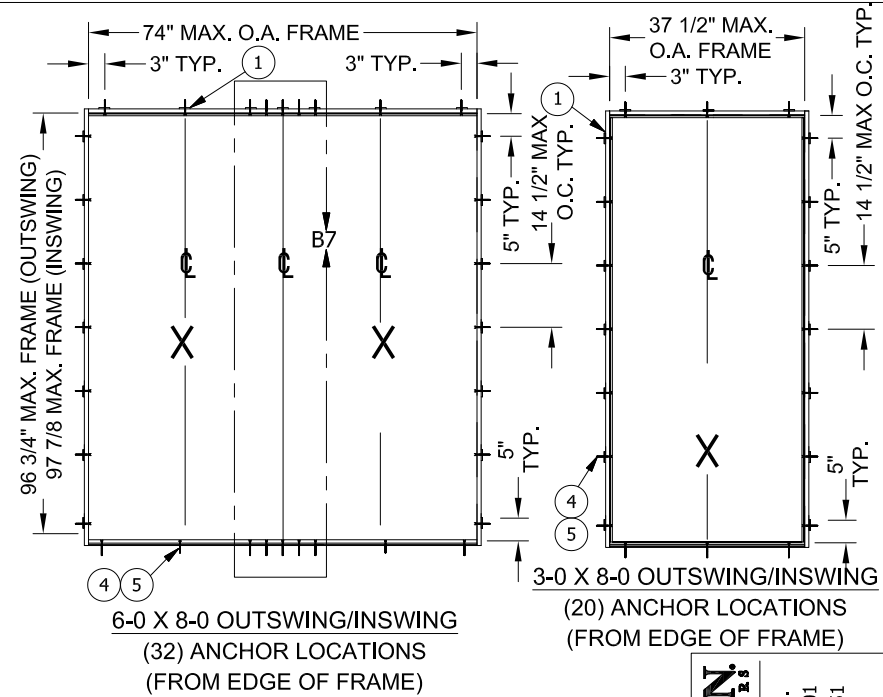
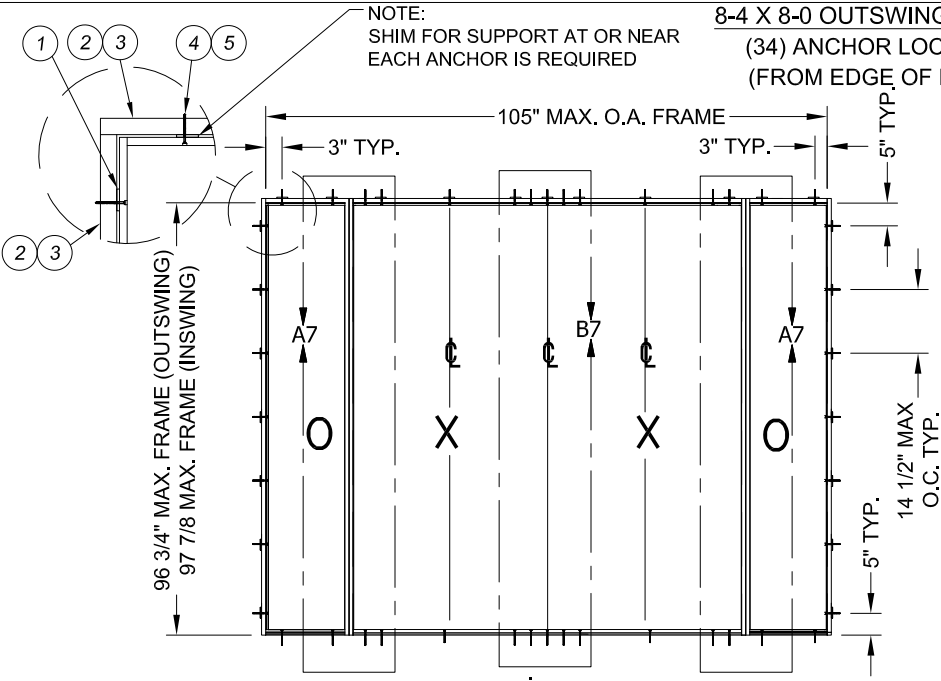
**JELD-WEN**  
WINDOWS & DOORS  
3737 Lakeport Blvd.  
Klamath Falls, OR 97601  
Phone: (541) 882-3451  
Fax: (541) 850-2609

PRODUCT  
24 GA. STEEL W.E. UP TO 8-4 X 8-0 OPAQUE OP.  
WITH NON-IMPACT SIDELITES  
PART OR ASSEMBLY  
INSWING VERTICAL AND HORIZONTAL SECTIONS  
IN MASONRY/CONCRETE

DATE: 1/20/2012  
SCALE: NONE  
DWG. BY: G.LUBBECKE  
CHK. BY: S.SAFFELL  
DRAWING No.: D015858  
SHEET 6 OF 7

NOTE:  
SHIM FOR SUPPORT AT OR NEAR  
EACH ANCHOR IS REQUIRED

**8-4 X 8-0 OUTSWING/INSWING**  
(34) ANCHOR LOCATIONS  
(FROM EDGE OF FRAME)



OUTSWING OR INSWING

OUTSWING ONLY

INSWING ONLY

**DETAIL B7**  
(10) ANCHOR LOCATIONS  
AT ASTRAGAL

**DETAIL A7**  
(6) ANCHOR LOCATIONS AT MULLION  
(XO SHOWN, ON OPPOSITE SHOWN)

**HERMES F. NORERO**  
LICENSED PROFESSIONAL ENGINEER  
No. 73778  
STATE OF FLORIDA  
398 E. DANIA BEACH BLVD, STE. 338  
DANIA BEACH, FL 33004  
FBPE CERT. OF AUTH. NO. 29578

**JELD-WEN**  
WINDOWS & DOORS  
3737 Lakeport Blvd.  
Klamath Falls, OR 97601  
Phone: (541) 882-3451  
Fax: (541) 850-2609

PRODUCT  
24 GA. STEEL W.E. UP TO 8-4 X 8-0 OPAQUE OP.  
WITH NON-IMPACT SIDELITES  
PART OR ASSEMBLY  
INSWING AND OUTSWING ANCHORING DETAILS

DATE: 1/20/2012  
SCALE: NONE  
DWG. BY: G.LUBBECKE  
CHK. BY: S.SAFFELL  
DRAWING No.: D015858  
SHEET 7 OF 7